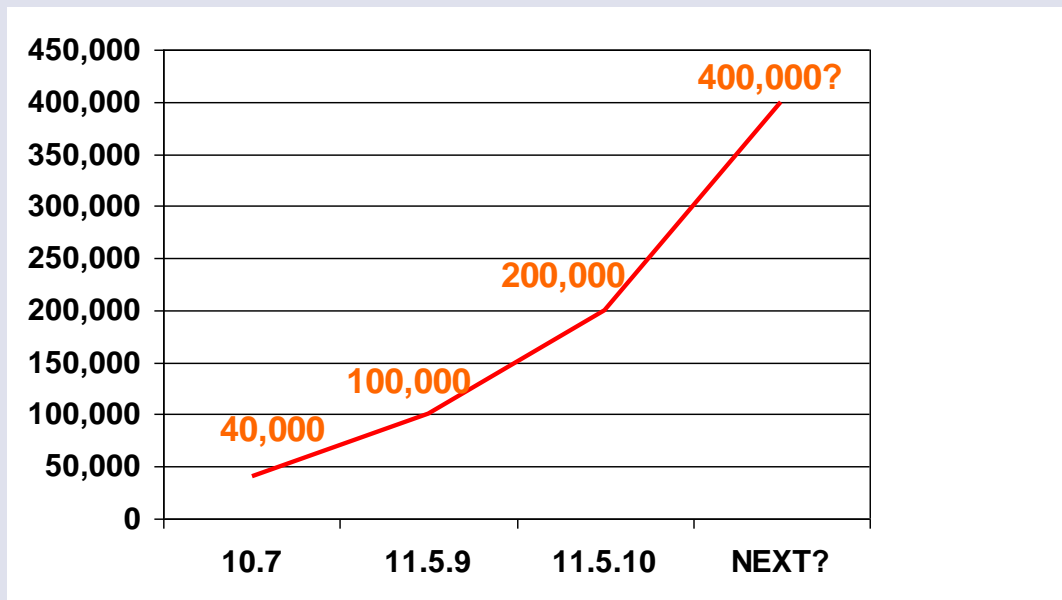


BPT Accelerator Testing & Documentation Suite for Oracle 11i

Rexel Inc. – Case Study

Martha Smith
Solution Beacon, LLC.

Testing is Not Going Away Anytime Soon!



Bug Incidences Accepted by Oracle Support as of April 2006.

Source OAUG

The Accelerator Testing & Documentation Suite

- Comprehensive Automated Testing for Oracle 11i / 12i 'Out-of-the-Box'
 - Pre-Built, Automated 11i / 12i Test Cases and End-to-End Scenarios
 - Integrated & Automated Test Data Creation and Management
 - Implemented to match each Client's Unique 11i / 12i Environment
 - Produced Customized Training Documentation which updates itself
 - Update Service provides new Test Cases for 11i Upgrades
 - Oracle-knowledgeable 1-800 Support included

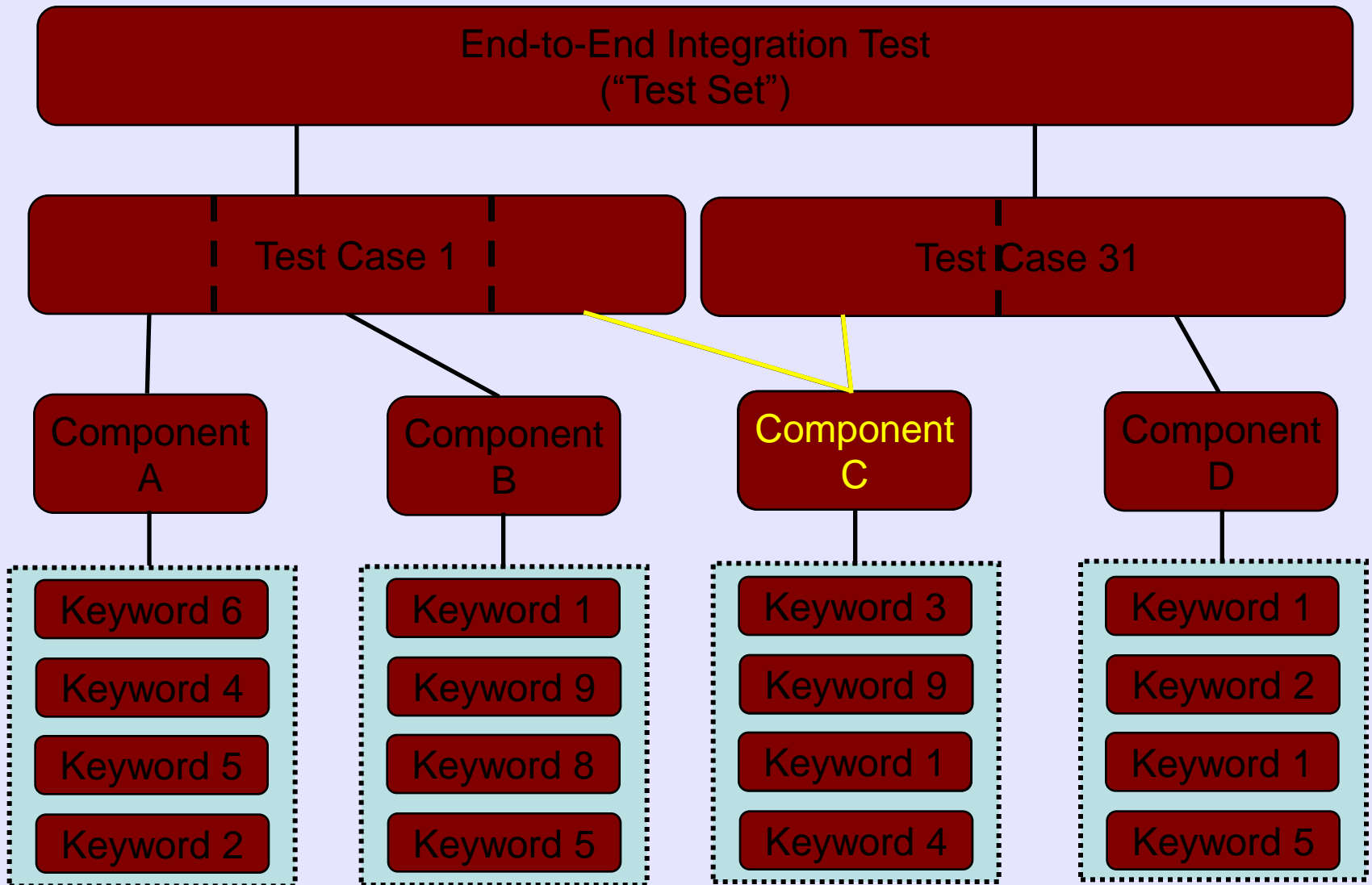
Covers the Testing Needs of the 11i Enterprise

Class-Based Framework = New Technologies

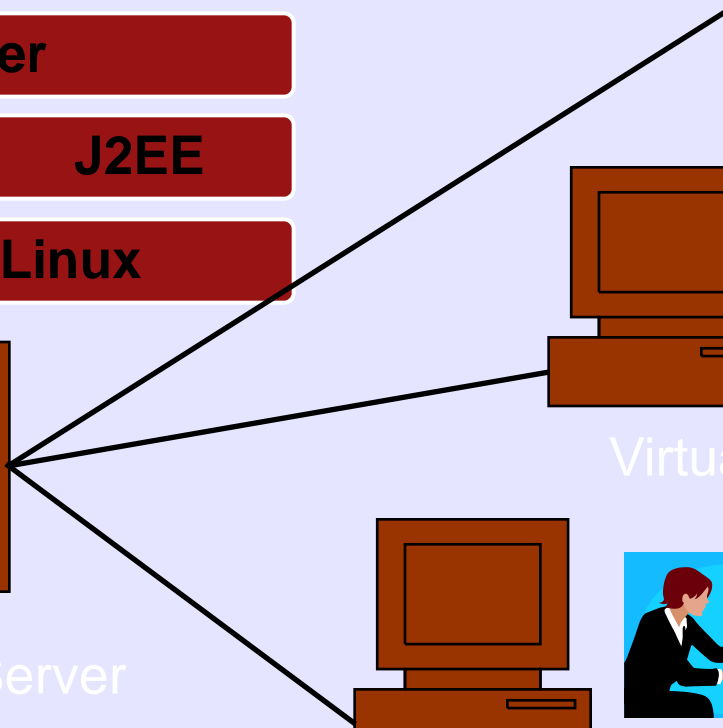
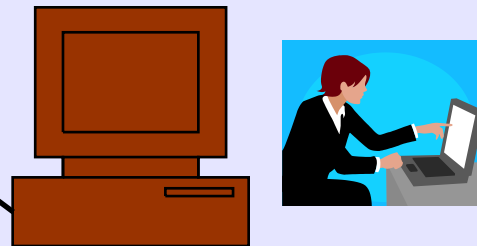
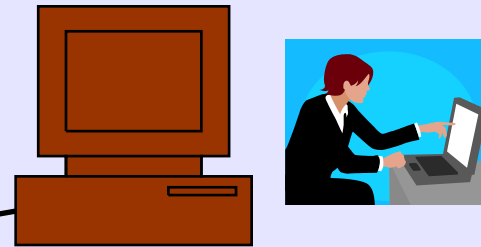
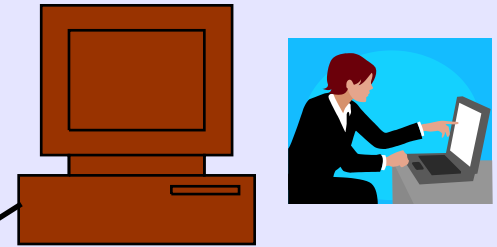
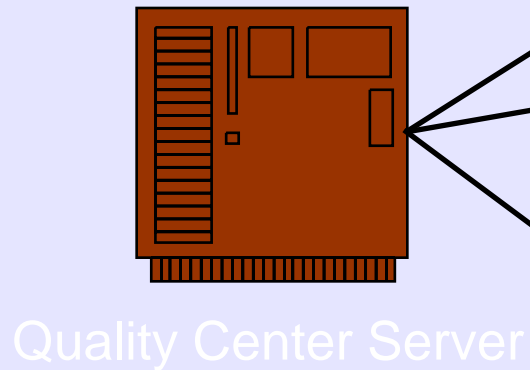
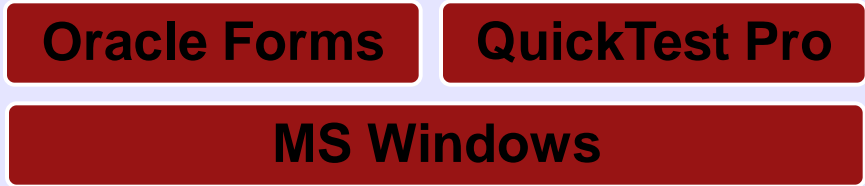
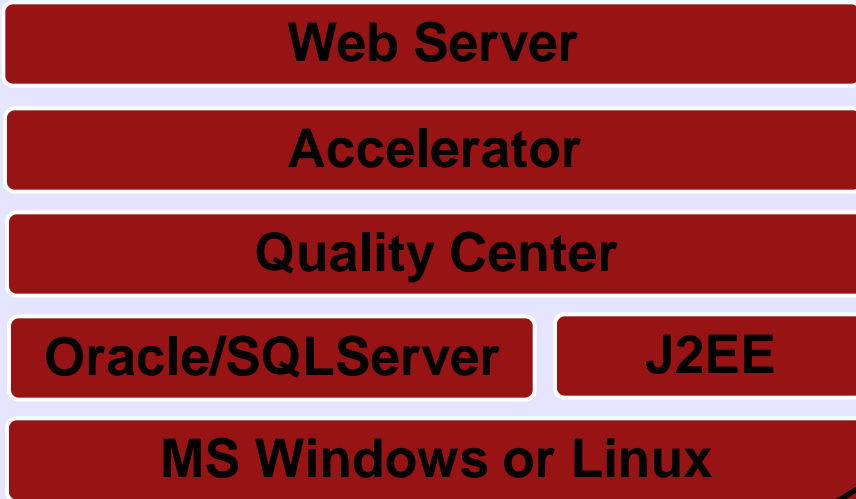
- Designed to be Used by Non-Technical Subject Matter Experts – NO CODING
- Test Cases and Integration Tests Arrive Out-of-the-Box. No More Lengthy and Expensive Development Cycles!
- Componentized Design speeds up Implementations and Reduces Maintenance 80%+ vs. “Record & Program”

Customer-Ready Out of the Box

Accelerator Design



Accelerator Architecture



Demonstration

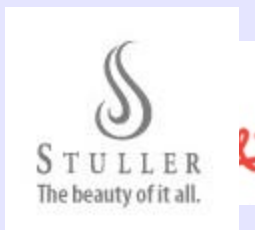


Accelerator Summary

- Accelerator for E-Business Suite provides Comprehensive, Out-of-the-Box Automated Testing with Quick Installation/Customization
- Eliminates Pulling-In End Users for most Patch and Upgrade testing
- Speeds Up New Implementation, Patching and Upgrade Cycles
- Increases Production Quality while Limiting 'Unexpected' Outages
- Covers most Major Modules in v11.5.3 - 11.5.10 and 12i

Complete Functional Testing System for 11i / 12i

Customers & Industries



Other Available Accelerator Toolsets

Comparator

Change Management and Test Identification

AutoData

Automatic Test Data Generation & Maintenance

TDG

Automated Training & Audit Document
Generation+Updating

Rexel Inc.

Case Study

– Rexel Inc. - Client Profile (*as of Jan 25,2006)

- Electrical distribution company
- 1967: Creation in France of CDME, later renamed Rexel.
- World Headquarters – Paris, France
- N#1 worldwide network in the distribution of electrical parts and supplies with a 7% share of the market
- Owned by: MLGPE , Eurazeo and CD&R
- Operations in 24 Countries with 1,686 locations
- 2005 Revenues: \$7.4 billion Euros.
(38% from the Americas, 54% from Europe, 8% from Asia-Pacific)
- 22,000 employees worldwide

– Oracle System Profile

- Running Oracle 11.5.9+
- Oracle Customer since 2000
- Modules: OM, INV, PO, Pricing, PRJ, AR, AP, FA, CM, Treasury, Incentive Comp, iStore, and GL
- Single Production Instance – Hosted and Supported In-House
- Highly Customized Environment: most customized: Order Management, Projects, RPM (in development)
- Multiple 3rd party applications interfaced to Oracle – (NOT automated To Date)
- Avg User Load:174 Peak User Load:713 Named Users:1162

– Oracle Testing Environments

- Multiple Testing Instances
- Unit Testing – Prod-DEV and Enhancement-Dev
- System Testing – Prod-TST and Enhancement-TST
- Regression Testing – Pre-Prod
- Promotion Progression: Dev, Test, Pre-Prod, Prod
- Hardware Environments Sizing: Approx 50% of Production Systems
- Synchronization to Prod done via Prod Refreshes – Cycle varies between 7 - 90 days

– Testing Prior to Accelerator

- Testing distributed throughout the various support groups
- Limited patching was done because of the customizations to Oracle and the resources available to sufficiently test the patches

– Accelerator Project

- Accelerator Modules Implemented
 - OM, INV, SHIP, PO, AR, AP, FA, CM and GL
- Extensions / Customizations
 - Oracle Order Management is very customized at Rexel, as a result Accelerator was built out to meet these testing needs
 - The testing framework Accelerator promotes was used to build any additional components, test cases or test sets
 - For all other applications additional test objects were build only based on Rexel specific business flows

- Accelerator Project (cont)
 - Implementation Details
 - Started 4/01/2006
 - Phase I Implementation Completed 7/30/2006
 - » OM, INV, SHIP, PO
 - » This phase created coverage for about 75% of the manual testing that was being done
 - Phase II Implementation Completed 9/30/2006
 - » This phase created coverage for 90% of the manual testing that was being done
 - 2 TurnKey personnel (1.25 FTE equivalent) / 4 Solution Beacon personnel (2.5 FTE equivalent over the 6 month period) / 1 Rexel person

- Accelerator Environment
 - Mercury Tools & Environments
 - QC 8.2 – 20 Licenses
 - 10 BPT Licenses
 - QTP 8.2 – 10 Licenses
 - All tools Installed and Supported In-House

– Accelerator Put into Use

- Cost Savings
 - Expect to cut testing costs by 75% by using the automated solution
- On-going Accelerator Support Personnel
 - Testing is Performed by 3 Rexel Resources (1 Internal, 2 Contract)
 - These Resources Allocated at 100% FTE each
 - No Test Automation Background

– Accelerator Put into Use (cont)

- Personnel responsibilities

- Work with development to understand the weekly changes being made based on production fixes and how this affects the test sets/cases
- Continue to develop additional test sets/cases for new functionality being developed

- Execution Metrics

- Patching

- » Performed 1 time per Month
- » Approx. 500 Test Cases in the Regression Test Sets
- » Avg 2 data sets per Test case and per Test Set
- » 10 Hours to Complete across 5 QTP Workstations

- Accelerator Put into Use (cont)
 - Execution Metrics (cont)
 - Mini-Packs / Customizations / Family or Maintenance Packs
 - » Performed 1 time per Quarter
 - » Approx. 500 Test Cases in the Regression Test Sets
 - » Avg 2 data sets per Test case and per Test Set
 - » 10 Hours to Complete across 5 QTP Workstations

– Major Testing Initiatives

- Initiatives using the automated testing
 - iStore patches
 - 10G database upgrade
 - OATM

– Major Testing Initiatives (cont)

- Initiatives using the automated testing
 - Oracle CPU patches
 - » For each of these initiatives the automated regression tests are run in at least 4 instances
 - » As issues are identified additional patches are identified and the automated regression tests can easily be run again after the additional patch is applied
 - » For each of these initiatives the automated regression tests have been substituted for approx. 10 FTEs and 320 man hours over 2 weeks time.
 - » The automated tests are run in under 10 hours

– Accelerator Testing Results

- Bugs / Issues
 - Have found significant issues during Accelerator Testing
 - Accelerator Testing has saved 20 Person-Hours per week in Re-Testing
- Time Savings
 - Have Saved 40 Person-Days to Date
- Increased Testing
 - Number of Patch Testing runs has Increased by 50%
 - Number of Mini-Pack / Customization Testing runs has Increased by 75%
 - Number of Family Pack / Maintenance Pack Testing runs has Increased by 75%

Thank you!

Martha Smith

msmith@solutionbeacon.com

www.solutionbeacon.com

Dale Ellis

dale.ellis@turnkeysolutions.com

www.turnkeysolutions.com

Visit **Booth #339**
to Register for a
**World Class
Weekend Trip!**

Visit **Booth #339**
for **Free Thumb
Drives & Daily
Givaways!**

Got Oracle? Get the Book!

Installing, Upgrading
and Maintaining
Oracle E-Business Suite
Applications 11.5.10+

It's available in
the OAUG Bookstore
or online!

Sign up for the
Solution Beacon Newsletter
www.solutionbeacon.com

*Solution Beacon and OnCallDBA
Installing, Upgrading and Maintaining Oracle E-Business Suite Release 11i*



(or "Teaching an Old Dog New Tricks - Release 11i Care and Feeding")

*Installing, Upgrading and Maintaining
Oracle E-Business Suite Applications
Release 11.5.10+*

*By Barbara Matthews, John Stauffer, Randy Giefer, Karen Brownfield, Jeff Holt,
Bruno Coon, James Morrow, Tim Sharpe and Faun deHenry*

Available at www.solutionbeacon.com