



Financial Statement Generator

Rob Gonsa

Solution Beacon

About Solution Beacon

- **Solution Beacon** is a leading provider of expert-level resources to Government Agencies and Fortune 1000 companies specializing in the Oracle Applications marketplace, providing leading expertise in the following areas:
 - Release 11i Upgrades/Implementations
 - Oracle Apps Database Administration
 - Oracle Systems Architecture
 - Oracle Performance Tuning
 - Oracle Workflow



FSG Tips

- Clearly define reporting requirements
- Start with basic FSG structure utilizing a Balance Sheet & Income Statement
- Keep your reporting Structure Simple
 - Row Set
 - Column Set
 - Report
- Utilize ADI request sets to publish FSGs & Standard Reports



Advanced FSG Topics

- Consolidated Reports
- Report Creation with varying detail levels
- Changing Columns sets
- Utilizing segment Overrides
- Utilize % of rows % of columns
- Statistical accounts



Components

- Row Set – Typically for:
 - Account Assignments
 - Calculations
 - Formatting underlining, page breaks, extra lines
- Column Set – Typically for:
 - Amount Type
 - Offset
 - Calculations
 - Formatting numbers in each column



Components

■ Content Set

- Repeat use of row/column set combination for multiple value of parent, or add them together or both

■ Row Order

- Display description with or instead of number
- Sort row by value in a column
- Change account segment order

■ Display Set

- Blank out intersection of row and column



Components

- Report
 - Combination of row and column, and (optionally) row order and display set
- Report Set
 - Collection of reports that should be run at the same time



Defining Row Set

- Reports => Define => RowSet
- Enter Name and Description
- Releases prior to 11i, enter title
- Do not use & in Name (disables ability to copy FSGs from database to database)
- Choose Define Rows



Defining Row Set

Oracle Applications - Vision 11.5.10

File Edit View Format Tools Window Help

Rows (Misc Operations) - Analysis Row Set

Line: 10 Line Item: Revenue

Format Options

Indent: 0 Lines to Skip: Before 0 After 0 Underline Character: Before 0 After 0 Page Break: Before 0 After 0

Advanced Options

Balance Control

Amount Type: Currency: Control Value: Offset:

Override Column Calculations

Row Name: Row 1 Percent of Row:

Display Options

Format Mask: Factor: Level of Detail: Display Row Display Zero Change Sign Change Sign on Variance

Account Assignments Calculations

Record: 1/2 +ESC+

- Line Number-required – controls sequence of display
- Description
 - Prints on report
 - May be blank
- Formatting of row
 - Indent
 - Lines to Skip
 - Underline Character
 - Page break

Defining Row Set

■ Advanced Options

- Row Name – to use name instead of number in calculations
- Percent of Row – see slides on Percent of Row
- Override Column Calculations – check if using both row and column calculations and row calculation should be used in all columns (example, % calculations of totals)



Defining Row Set

■ Display Options

- Format Mask – used to override Column, such as a percentage row that should only have 1 decimal point
- Level of Detail – no value = Financial Analyst
 - Financial Analyst
 - Supervisor
 - Controller



Defining Row Set

- Display Options (continued)
 - Factor – none, Thousands, Millions
 - Display Row – if unchecked, row will not display regardless of values in each column
 - Display Zero – if unchecked and ALL columns zero, row will not display
 - Change sign – allows displaying of revenues and liabilities as positive without calculations
 - Note: For calculations, still a credit
 - Change sign on variance – if amount type is variance, reverses sign of result (comparison is budget vs actual)



Defining Row Set

- Balance Control – N/A for Calculations – use when need different amount type/currency for this row different than that specified in the column - will apply to ALL COLUMNS for this row ONLY
 - Amount Type (usually specified in Column Set)
 - Currency – to pull in STAT, for example
 - Control Value – required if Amount Type is Budget or Encumbrance or Variance
 - Can also be used to specify different currencies at report definition time
 - Offset – to move reporting period forward or backward



Defining Row Set

- Assignments
 - Only specify segments that restrict selection
 - Display Types
 - T – Total – use this one for segments where no value specified
 - E – Expand range and display all values
 - If parent value assigned to rollup group – FSG:Expand Parent Value must = No
 - B – Expand and Total



Defining Row Set

- Summary Flag
 - Segment must be parent used in summary account
 - Yes
 - Reads summary balance instead of calculating balance
 - Turns E to T
 - No
 - If Display Type = E, expands to lowest level of children



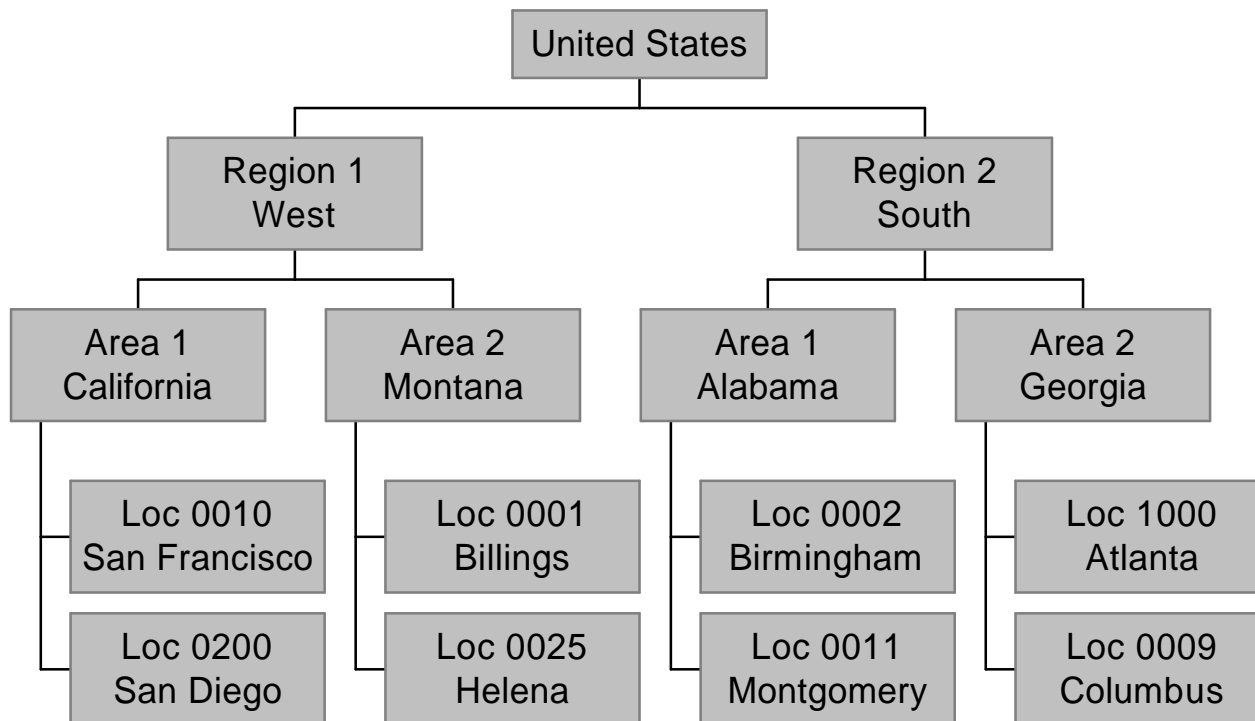
Defining Row Set

- Activity Type – Net, DR, CR
- Set-of-books
 - If not specified, defaults to value in responsibility
 - Can select other SOB, if share same calendar and chart of accounts
 - Must specify Net activity type if different SOB



Sample of Expanding

Sample Hierarchy



Sample of Expanding

- Value US through US, Summary = 'Yes'
 - No expansion
- Value US through US, Summary = 'No'
 - Expands to each city, not each state
- Value AL through WY, Summary = 'Yes'
 - Expands to show total for each state
- Value AL through WY, Summary = 'No'
 - Expands to each city in city order



Defining Row Set

■ Calculations

■ Valid operators

- + - * / %
- ENTER – Enter Value – may have to do an Enter 0 (zero) if first calculation is not +
- MODE
- AVERAGE
- MEDIAN
- STDDEV – Standard Deviation
- ABSTVAL – Absolute value



Easy Calc

- $[(A+B)*C] / (D + G)$
- Enter A
- + B
- * C
- Enter D
- + G
- /



Defining Column Set

- Reports => Define => ColumnSet
- Enter Name and Description
- Do not use & in the Name (disables ability to copy column sets from database to database)
- (Optional) Override Segment – If want each column to represent a different company, then specify company segment here
- Choose Define Columns



Defining Column Set

- Format Mask
 - How negatives displayed are Profile Option
Currency:Negative Format
 - Thousands separator are Profile Option
Currency:Thousands Separator
- Factor – none, Thousands, Millions
- Currency – default is the SOB currency
- Offset-adjusts period reports forward/backward



Defining Column Set

■ Amount Type

- PTD Actual, PTD Budget, PTD Encumbrance
- QTD Actual, QTD Budget, QTD Encumbrance
- YTD Actual, YTD Budget, YTD Encumbrance
- Project-Actual, Project-Budget, Project-Encumbrance
- PTD, QTD, YTD, Project Variance – budget to actual
- PTD, QTD, YTD, Project Variance%



Defining Column Set

■ Amount Type

- BAL-Actual(FY Start) – Balance at start of year – for balance sheet reporting
- YTD-Budget (FY End) – Budget for full fiscal year
- YTD-Encumbrance (FY End) – Encumbrance for full fiscal year
- YTD-Actual (FY End) – FP D – Actual balance for full fiscal year



Defining Column Set

- Control Value – required if Budget or Encumbrance or variance or need to specify currency at report definition time



Defining Column Set

- Display Options
 - Level of Detail (more useful at row level)
 - Display column (check this for all columns that should show on report, or if all zero, report will be blank)
 - Display zero
 - Change sign
 - Change sign on variance



Defining Column Set

- Column Name/Description – useful to identify what column is used for when defining complex column sets – name shows in column builder
- Percent of column – see percent of row slide
- Override value – if specified override segment, then the value for that segment this column should report on
- Override row calculations – check to force FSG to use column calculations over row



Defining Column Set

- Assignments and Calculations same as for rows
- Exceptions
 - Choose column that is basis for exception
 - Choose character that denotes exception (prints at margin, not in the column)



Defining Column Set

- Exceptions (continued)
 - Define condition(s)
 - Multiple conditions must all be met
 - To define multiple conditions that one one must be met, define display column with all parameters except exception. Define multiple non-display column each with a different exception that uses calculation to add the display column – example col 5 is the display column, col 6 has calculation of + with low/high range of 5 and exception 1, col 7 has calculation of + with low/high range of 5 and exception 2, etc



Create Column Headings

- Reports that can be printed are either 80, 132, 181, or 255 characters wide (printer restriction, not FSG)
 - 80 requires profile option FSG:Allow Portrait Style=Yes
 - 255 requires setting up custom print style or looking for the SpaceLabs one – FSG uses print style that has lowest sequence number that will handle width
- Greater than 255 characters can only be run through ADI – but must still have a print style

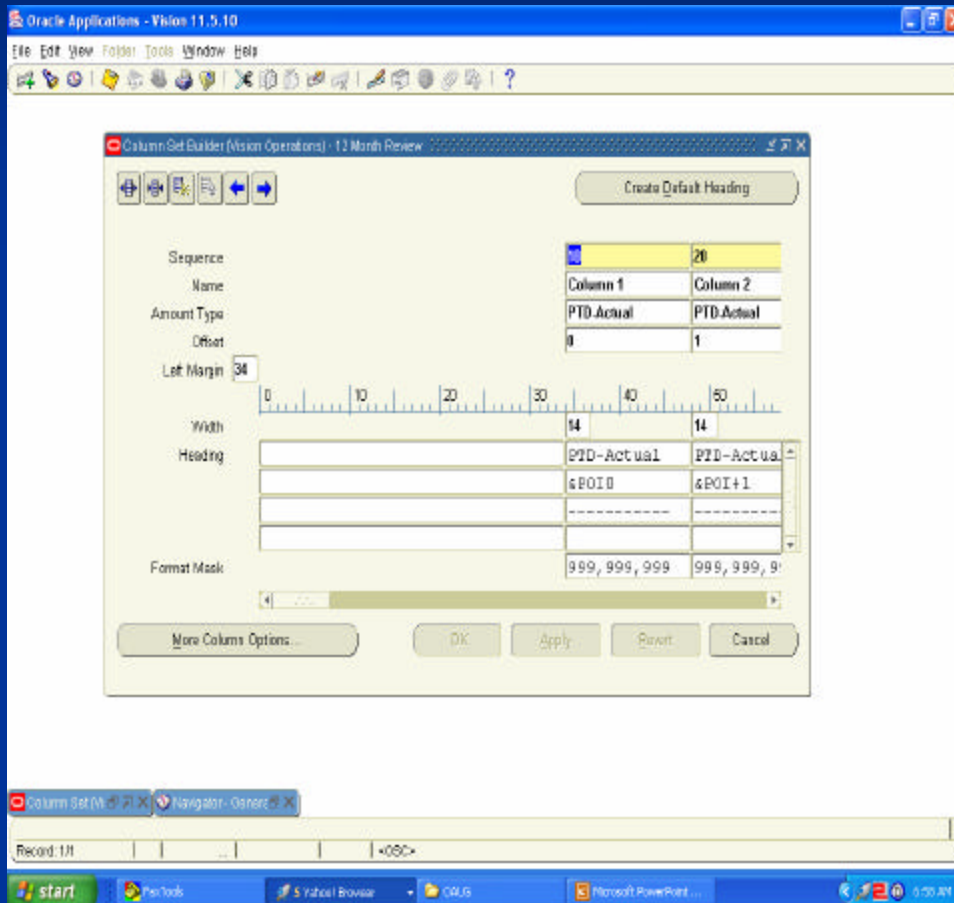


Creating Column Headings

- From top block of Define Column Set can
 - Create column Headings
 - Create Default Headings
 - Build Column Set (best, but can only format 20 columns)



Column Set Builder









- Pick total width of report to target – check right most column and see how room left
- To squeeze
 - Adjust left margin
 - Adjust size each column

Column Set Builder



The Column Set Builder toolbar provides pushbutton shortcuts for various layout commands, as follows:

	Increase column width		Delete column
	Decrease column width		Move column left
	Add column		Move column right

Printing and Column Widths

- If Column width is too small to print value with formatting options the following rules IN ORDER are used to shorten the field
 - Print as many leading characters as will fit
 - Print as many trailing characters as will fit
 - Omit thousands separator
 - Omit Positive and Negative Currency format characters ('-' will be substituted for the negative character)
 - If still can't fit value, PRINTS ### instead



Column Set Builder

- Headers can have 1-4 lines – if need more, must use the column window to define them, then can use this window to edit them
- Recommend using dashes as last line so data is not confused with headers
- Relative Headings
 - &
 - POI, BUDGET,CURRENCY,ENCUMBRANCE
 - Number – for POI, relative offset, example &POI0 is the period requested for the report, &POI-1 is the previous period, &POI1 or &POI+1 is the next period



Defining Content Sets

Oracle Applications - Vision 11.5.10

File Edit View Folder Tools Window Help

Content Set (Vision Operations)

Name: **Expand by Sales Department**

Description: _____

Type: **Sequential**

Seq	Low	High	Display	Summary
5	ASR---	ASR---	N.PE.N.N	
10	402---	404---	N.PE.N.N	
20	420---	420---	N.PE.N.N	
30	450---	450---	N.PE.N.N	

AutoCopy

Record: 6/13

start FaxTools Yahoo! Browser CALIS Microsoft PowerPoint ... 7:00 AM

- Reports => Define => ContentSet
- Fill in Name (no &) and Description
- Type
 - Sequential – one print file
 - Parallel – multiple print files



Defining Content Sets

- Fill in Sequence Number, Low and High account range, Display, and Summary
- To get page expand and total, define one row PE, one row PT with same account range



Defining Content Sets

■ Display Types

- N – no segment value is specified
- PE – for each value in the range for this segment, print a separate report (from ADI, each “report” is a separate sheet)
- PT – one report that has the total of all values in this range
- RE – Row expand – EACH ROW separately
- RT – Row Total
- RB – Row expand and total
- CT – Column total

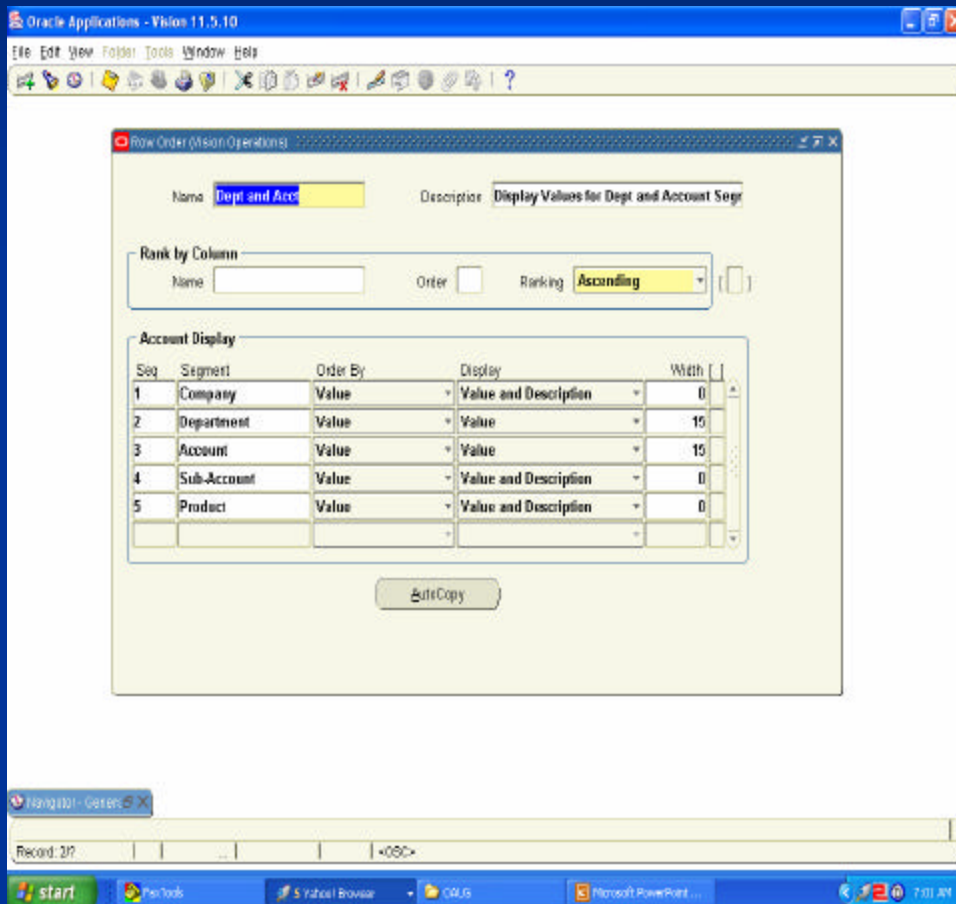


Defining Content Sets

- Summary = Yes – reports on only values in range that belong to summary accounts
- Summary = No – reports on only values in range that do not belong to summary accounts
- Summary left blank defaults to row definition



Defining Row Order



- Display description with/instead of value
- Sort rows (when expanded) by value, description, value of column
- Rearrange order of display of segments
- Omit some/all segment headers

Defining Row Order

- Reports => Define => Order
- Fill in name and description
- Must specify all segments
- Sequence number determines order of display
- To have segment (and header) not display, set width to zero
- Order by (for rows with E option)
 - Value
 - Description
 - Ranking Column – requires filling in Rank By Column info

Defining Row Order

- Segment Display by
 - Value
 - Description
 - Value and Description
- Width
 - Add values specified for each segment
 - Add space between each segment for which width not equal zero
 - Must be less than left margin defined in column header

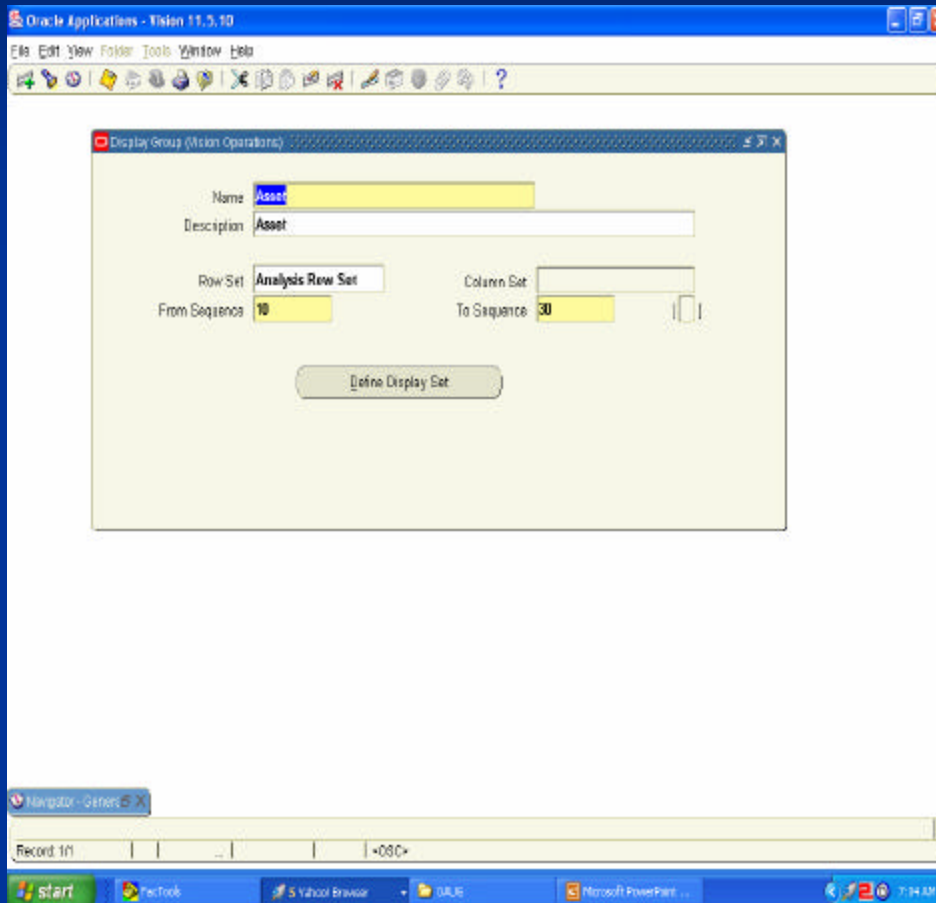
Defining Row Order

- Rank by Value in Column
 - Specify either name of column to rank by or order
 - Order is the sequence of the DISPLAYED columns, not the column sequence number
 - Select Ascending or Descending
 - Reminder – at least one segment must have the order by set to ranking



Define Display Set

- Must Define Display Groups first
- Reports => Define => Display => Group
- Enter Name (no &) and Description
- Specify Row or Column Set name
- Specify sequence #'s
- Must have at least one group that specifies row set and at least one group that specifies column set



Define Display Set

Oracle Applications - Vision 11.5.10

File Edit View Folder Tools Window Help

Display Set (Vision Operations)

Name: Asset
Description: Asset
Row Set: Analysis Row Set
Column Set:

Set	Display	Row Group	Column Group	Description
01	<input type="checkbox"/>	Asset		
	<input type="checkbox"/>			
	<input type="checkbox"/>			
	<input type="checkbox"/>			

Row Group: Row Set: Analysis Row Set, From Seq: 00, To Seq: 30
Column Group: Column Set: , From Seq: , To Seq:

FRM-41031 - List of Values contains no entries.
Recid: 1/1 | List of Valu... | +OSC+

- Reports => Define => Display => Group
- Enter Name (no &) and Description
- Can specify row group or column group by itself to hide sensitive rows/columns

Define Display Sets

- Can specify both row and column group to block printing of specific cells
- If do not unclick the display box, then display set has no value as rows/columns not prohibited by the display set will display anyway



Define Report

Oracle Applications - Vision 11.5.10

File Edit View Folders Tools Window Help

Define Financial Report (Vision Operations)

Name: Actual/Budget Income Statement

Title: Actual/Budget Income Statement

Description: Income Statement to include Period-to-date and Year-to-date Budget and A

Required Components

Row Set: Income Statement

Column Set: PTB, YTD Variance

Optional Components

Content Set:

Row Order: Account Format

Display Set:

Other Options

Segment Override:

Currency: USD

Rounding Option: Calculate Then Round

Level of Detail: Financial Analyst

Output Option: Tab Delimited

Control Values

Run Report Define Report Set AutoCopy

Navigator - General

Period: 107

start Facebook Oracle Browser Oracle Microsoft PowerPoint

- Reports => Define
=> Report
- Fill in Name and Description (Title is specified at row set level until Release 11i, then specified here)
- Fill in Row set and column set (required)

Define Report

- (Optionally) fill in content set, row order, display set
- (Optionally) select values for the segment(s) you wish to restrict reporting to
- (Optionally) enter default currency – this will override all rows where currency not specified – without this option, uses SOB currency
- (Optionally) specify rounding option
 - Calculate then round – usually more accurate
 - Round then calculate



Define Report

- (Optionally) select level of detail
- (Optionally) select Output option
 - Text
 - Tab-delimited
 - Spreadsheet
- If row/column set specifies control values, click the control values button and specify which budget/encumbrance/currency goes with which value
 - Currency Only – Select Entered or Translated
 - If specify control values in both row/column, intersecting values must be the same

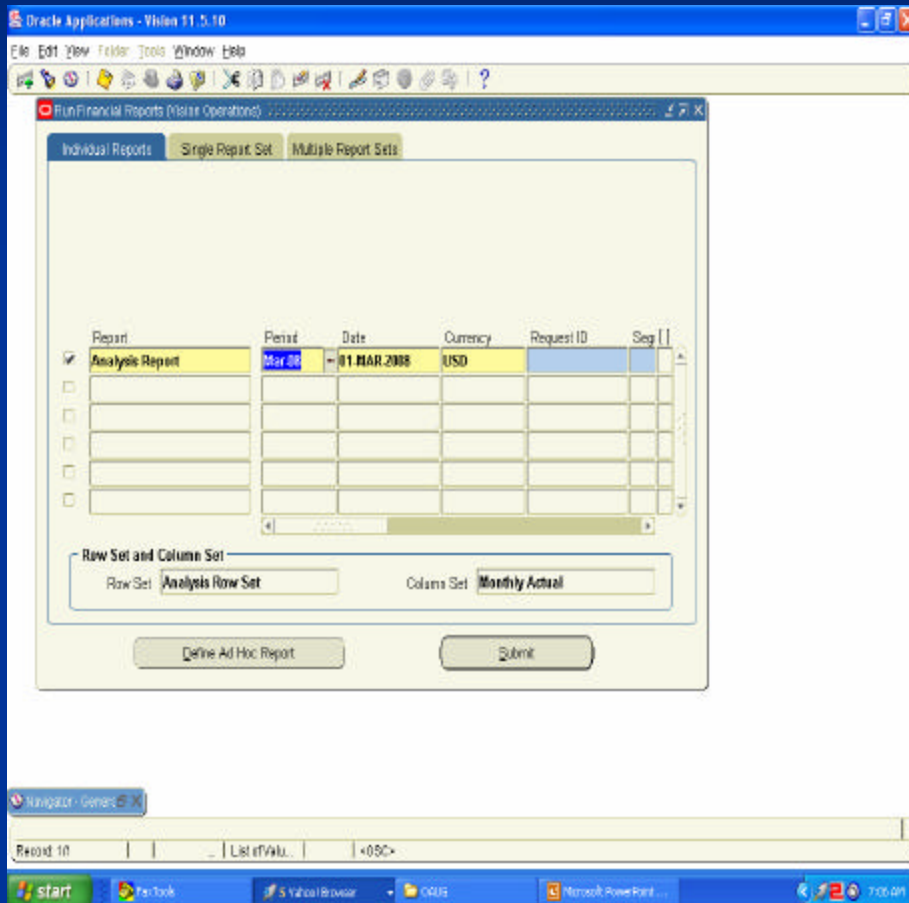


Define Report Set

- Reports => Define => ReportSet
- Specify name and description
- Specify sequence number and name of report
- Repeat adding sequence numbers and report names



Requesting Reports



- Reports => Request
=> Financial
- Select Report and
Period – fills in all
components defined
in the report

Requesting Reports

- Can change or add
 - Currency
 - Content set
 - Row order
 - Display set
 - Override segment
 - Rounding option
 - Output option



Requesting Reports

- If select Yes for Exceptions, prints ONLY exception rows
- Level of Detail is only available as an option if run FSG from submit concurrent request screen (Program-Run Financial Statement Generator)

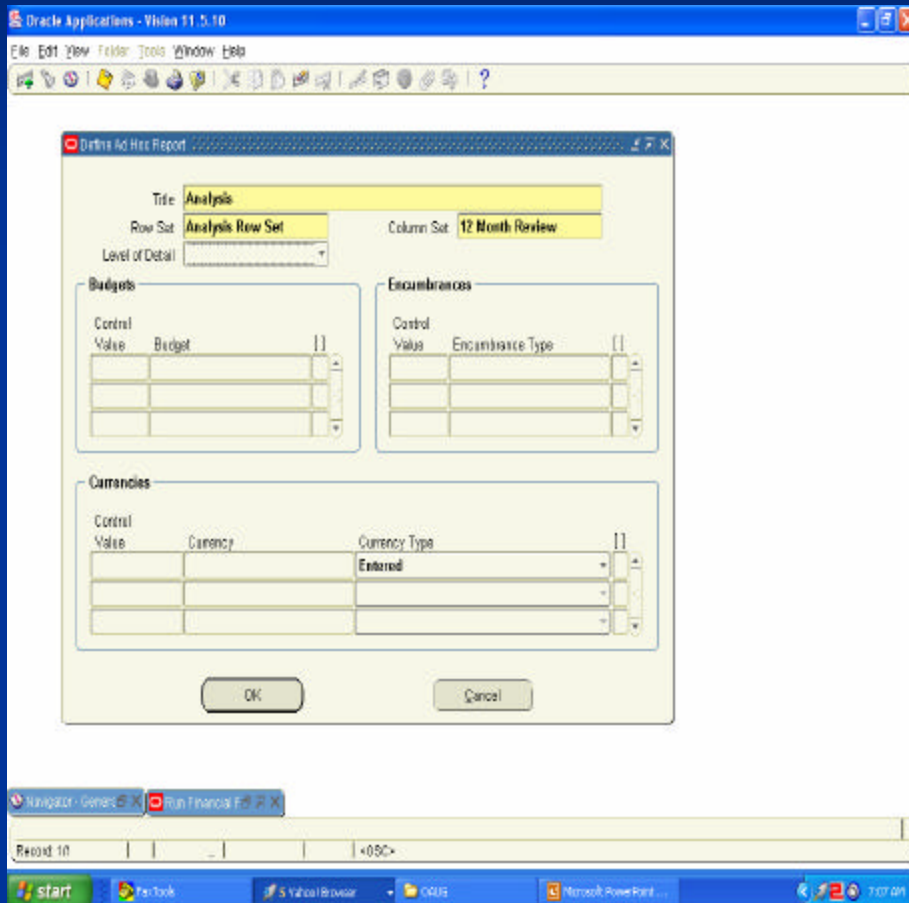


Requesting Report Sets

- Reports => Request => Financial
- Click the Report Set tab – Single or Multiple
- Select the set and specify the period
- Select Apply to have period be the same for each report in the set
- Either click which reports to run or click Select All Reports



Ad-hoc reports



- Click the Define Ad-hoc report button from the Run Financial Report screen
- Fill in row set and column set
- If control values required, field “un-grays” – enter
- Click OK



Copying Report Objects (within database)

- Reports => Autocopy or Choose Autocopy button from any report definition screen
- Component – Select type of object to copy
- Source – Select name of object to copy
- Target – Select name for the object to be created
- Click Copy – starts concurrent process, when finished, can query new object and make necessary changes



Copying Objects – Database to Database

- Requires Chart of Accounts definition to be the same (not the values, the number of segments, length, etc)
- Requires System Administrator to set up the database links
- Any budgets, currencies referenced must exist in target database
- Copy is initiated from target database, not source



Copying Objects – Database to Database

- Navigate to Submit concurrent request window and select 'Program-FSG Transfer'
- Parameters
 - Component Type – Pick one or ALL
 - Component Name – Leave blank to copy all of a type or ALL
 - Source DB Chart of Accounts – must be typed and must match exactly as no way to validate this field
 - Target DB Chart of Accounts – choose from LOV
 - Source Database – choose from LOV



Copying Objects – Database to Database

- If object with same name already exists, no copy will be done and warning message will be printed
- If currency/budgets/encumbrances do not exist, copy will be performed, but references removed
- If program is interrupted, can be re-started with same parameters, objects already copied will just give warning message



Percent of Row

	Column 10 <u>Sales</u>	Column 20 <u>% of Total Sales</u>
Row 10	100	10
Row 20	400	40
Row 30	<u>500</u>	<u>50</u>
Row 40 (Total)	1000	100

- For rows 10, 20, 30, 40, specify 40 as the percent of row option
- For column 20, click calculations, choose % as the operator, and 10 and the column low and high value
- If % not correct in total rows, click the Override Column calculations in the total rows

Row Set vs Column Set Overrides

Option	Row Overrides Column	Column Overrides Row	Comments
Amount Type	Yes	No	Must specify amount type at Row level OR Column level. When you specify an amount type, you must also specify the period offset and any control values.
Offset	Yes	No	
Control Value	Yes	No	Must assign same currency, budget or encumbrance type at row and column level
Format	Yes	No	
Factor	Yes	No	
Display Zero	Yes	No	
Level of Detail	Yes	No	

Row Set vs Column Set Overrides

Row Set vs. Column Set Override Summary			
Option	Row Overrides Column	Column Overrides Row	Comments
Override Row/Column Calculations	No	Yes	A conflict exists only for those report cells where calculations are defined for both the intersecting row and column.
Activity (Dr, Cr, Net)	No	Yes	
Accounts	N/A	N/A	Report uses intersecting accounts
Summary	N/A	N/A	Must assign same summary option at row and column level
Currency	N/A	N/A	Must assign same currency to intersecting rows and columns; otherwise 0 (zero) appears in place of an amount.
Change Sign	N/A	N/A	Yes overrides No
Change Sign on Variance	N/A	N/A	Yes overrides No

Utilizing ADI

- Ease of changing the look and feel of the FSG.
- Running FSGs with Standard reports
- Uploading journal entries to General Ledger
- Downloading information from the General Ledger
- Formatting Reports in Excel
- Uploading and maintaining budget information
- Uploading assets from a legacy system





Thank You!

www.solutionbeacon.com